

# IBM TS2900 Tape Autoloader

Low-profile, entry-level IBM LTO tape storage for open system platforms



## Highlights

Save space with a slim 1U system designed for rack-mounted environments

Deploy the latest generations of LTO Ultrium half-height technology

Benefit from the lowest entry price of any IBM half-height tape solution

Simplify user access to data stored on tape cartridges with storage archive

As businesses continue to face challenges with data proliferation, storage and protection, cyberattacks are increasing in both frequency and severity. As a result, true air gap storage technology for primary and backup solutions is becoming increasingly important for disaster recovery and regulatory compliance. To address these challenges and better handle the growing data demands of modern tape use cases, enterprises need data solutions that incorporate the latest innovations in LTO technology.

The IBM TS2900 Tape Autoloader can be used in a rack system or on a desktop next to a server in an office environment. The autoloader's convenient and easy-to-use features help reduce the workload of IT personnel and centralize datacenter backups. The solution is also designed to support the encryption of sensitive user data in combination with half-height LTO Ultrium 7, 8 and 9 technology. Offering a 6 Gbps SAS interface on LTO Ultrium 7 and 8 or a 12 Gbps SAS interface on LTO Ultrium 9, the IBM TS2900 Tape Autoloader is compatible with IBM Power® Systems, Intel and other open-system server platforms.





**Save space with a slim 1U system designed for rack-mounted environments**

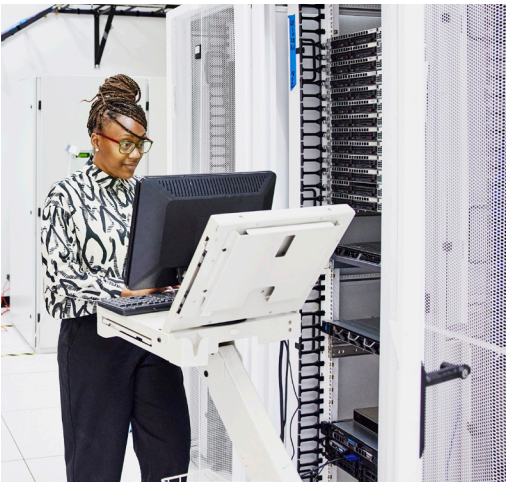
The IBM TS2900 Tape Autoloader has capacity for nine data slots—a total storage capacity of 405 TB with 2.5:1 compression when using LTO Ultrium 9 cartridges. It also has a single input/output (I/O) station designed to provide undisturbed library operation when extracting or inserting data cartridges. The IBM TS2900 Tape Autoloader uses one half-height LTO Ultrium drive for generations 7, 8 or 9 and is shipped as a rack-mounted unit with an optional desktop conversion kit.

**Deploy the latest generations of LTO Ultrium half-height technology**

Half-height LTO Ultrium 9 Tape Drives are designed to read and write data at a transfer rate of up to 300 Mbps and can store up to 18 TB on a single cartridge—or 45 TB with 2.5:1 compression. LTO Ultrium 9 Tape Drives can also read and write data to LTO Ultrium 8 data cartridges, further supporting current investments in LTO Ultrium resources.

## Benefit from the lowest entry price of any IBM half-height tape solution

Drive options	Half-height LTO Ultrium 9: 12 Gbps SAS Half-height LTO Ultrium 8: 6 Gbps SAS Half-height LTO Ultrium 7: 6 Gbps SAS Half-height LTO Ultrium 6: 6 Gbps SAS
Available models	LTO Ultrium 9 3572 S9H LTO Ultrium 8 3572 S8H LTO Ultrium 7 3572 S7H LTO Ultrium 6 3572 S6H
Optional feature codes	
Desk-side cover kit	FC #7010
Additional tape magazine	FC #8111
Rack-mount kit	FC #7006
Number of tape drives	1
Tape cartridge capacity	9
I/O stations	1
Physical capacity	LTO Ultrium 9: Up to 162 TB (405 TB with 2.5:1 compression) LTO Ultrium 8: Up to 108 TB (270 TB with 2.5:1 compression) LTO Ultrium 7: Up to 54 TB (135 TB with 2.5:1 compression) LTO Ultrium 6: Up to 22.5 TB (56.25 TB with 2.5:1 compression)
Data transfer rate	LTO Ultrium 9, 8, 7: Up to 300 Mbps LTO Ultrium 6: Up to 160 Mbps LTO Ultrium 5: Up to 140 Mbps
Dimensions (H x W x D)	1.7 in. x 19.02 in. x 33.3 in. (43.6mm x 445 mm x 847 mm)
Weight	28.6 lb (13 kg) without drive and cartridges
Attachment and systems support	TS2900 supports 12 (LTO 9) and 6 Gbps (LTO 8, 7) attachments available for selected IBM System servers and other Linux and Microsoft Windows open-system servers.  Latest support information: <a href="http://ibm.com/systems/support/storage/config/ssic">ibm.com/systems/support/storage/config/ssic</a>



### **Simplify user access to data stored on tape cartridges with storage archive**

The IBM TS2900 Tape Autoloader, when used with new LTO technology, can help organizations better handle the growing data demands of modern tape use cases like the flash-and-tape (FLAPE) infrastructure supporting media and entertainment, ultra-high-definition editing, digital video surveillance, Internet of Things (IoT), active file archiving and backup.

### **Conclusion**

The IBM TS2900 Tape Autoloader stands out as an excellent choice for midsized business environments due to its low-profile, high-density storage capacity. It is based on half-height LTO Ultrium technology, which is known for its high capacity and secured data backup capabilities, and is ideal for backup and archival operations.

### **Why IBM?**

IBM is dedicated to driving both innovation and business value, as demonstrated by the wide array of features, high capacity and ease of use of the IBM TS2900 Tape Autoloader. In addition to this solution, IBM also offers other advanced technologies, open standards, records of excellent performance and a broad portfolio of storage solutions—including hardware, software and services.

### **For more information**

To learn more about the IBM TS2900 Tape Autoloader, contact your IBM representative or IBM Business Partner or visit [ibm.com/products/ts2900](http://ibm.com/products/ts2900).

© Copyright IBM Corporation 2023

IBM Corporation  
New Orchard Road  
Armonk, NY 10504

Produced in the  
United States of America  
October 2023

IBM, the IBM logo, and Power are trademarks or registered trademarks of International Business Machines Corporation, in the U.S. and/or other countries. Other product and service names might be trademarks of IBM or other companies. A current list of IBM trademarks is available on [ibm.com/trademark](http://ibm.com/trademark).

LTO, the LTO Logo, Ultrium and the Ultrium Logo are registered trademarks of Hewlett Packard Enterprise, International Business Machines Corporation and Quantum Corporation in the United States and other countries.

This document is current as of the initial date of publication and may be changed by IBM at any time. Not all offerings are available in every country in which IBM operates.

THE INFORMATION IN THIS DOCUMENT IS PROVIDED "AS IS" WITHOUT ANY WARRANTY, EXPRESS OR IMPLIED, INCLUDING WITHOUT ANY WARRANTIES OF MERCHANTABILITY, FITNESS FOR A PARTICULAR PURPOSE AND ANY WARRANTY OR CONDITION OF NON-INFRINGEMENT.

IBM products are warranted according to the terms and conditions of the agreements under which they are provided.

