

Just Imagine

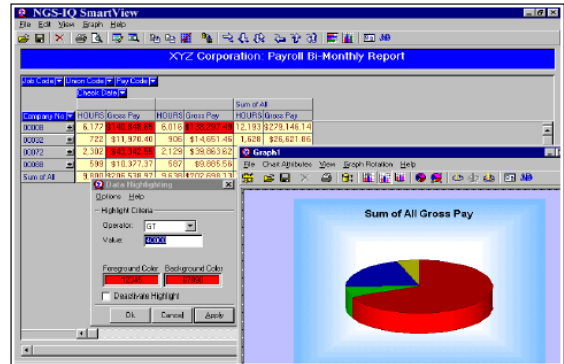
To make smart decisions, you need reports that reflect the complex, multidimensional nature of your business. How much time could you save if you could instantly reformat your most critical reports? Could you make quicker, more accurate decisions if you were able to highlight critical values and drill down or up through multiple levels of detail and summary data – even down to original purchase orders or invoices, for example? Could your remote users or traveling managers benefit by accessing your corporate data via the Internet and graphing the results in virtually any presentation format?

You can do all of the above and more with *SmartView*™ from New Generation Software, Inc. (NGS).

What is SmartView?

SmartView is the powerful, Windows online analytical processing (OLAP) system from NGS. It's a comprehensive business data analysis solution for senior managers and other key staff members who must make informed decisions quickly with the most current, accurate information.

With *SmartView*, any Windows user authorized to run *NGS-IQ*™ reports can build an unlimited number of multidimensional reports. *SmartView* can show you what you need in seconds without any programming or custom database design work on your IBM i (AS/400) — whether you want to see sales by division and territory;



product by quarter, month, and week; shipments by delivery plants; aged payables in 30, 60, and 90 day buckets; or any other type of analytical report.

How It Works

SmartView goes far beyond traditional two-dimensional spreadsheet reporting to support the kind of multidimensional summarization and analysis you need to gain new insight into your business. You choose the data elements and business factors you want to summarize and analyze.

NGS-IQ extracts the data you need from the IBM i, and then *SmartView* gives you the perspective you want in seconds. From there, you can use *SmartView's* intuitive, drag-and-drop graphical user interface to pivot and reformat your report as needed, filter out unwanted data, and graph selected slices of information. *SmartView* allows you to save as many different views of your data on your PC or network as you need. *SmartView* also gives you the flexibility to refresh your data from your host system as required.

I N F O R M A T I O N W H E R E I T C O U N T S

SmartView Features

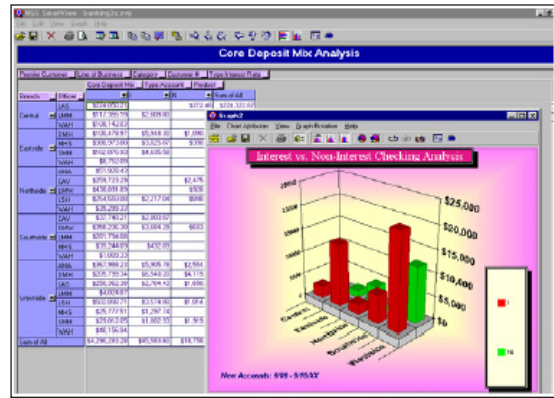
- Drag-and-drop formatting
- Drill-down from summary to detail in presentations and charts
- User-defined data highlighting logic
- Split screens for data comparison
- 2-D and 3-D graphics (pie charts, bar charts, line graphs, etc.)
- Ability to save *SmartView* presentations and charts as Adobe® PDF files using the Adobe Acrobat Distiller or a PDF printer driver
- Ability to copy/paste selected *SmartView* data into other applications, such as Excel

Complete Integration with NGS-IQ

SmartView is a completely integrated module of the *NGS-IQ* business intelligence system. This integration means you use the full database extraction and reporting power of *NGS-IQ* to build the queries you send to *SmartView*. It also means you can provide your managers with easy access to your data without compromising security or performance.

What is NGS-IQ?

NGS-IQ is a comprehensive query, reporting, and business intelligence software solution built for the IBM i. It includes both IBM i and Windows-based data extraction and reporting tools that provide you with advanced functionality and presentation features. You define your query with *NGS-IQ*'s *IQ Server™* (IQ), *IQ Client™*, or *Qport Builder™* modules. You may run these reports directly on your IBM i or from Windows or your Web browser. *NGS-IQ*'s *Qport Access™* module provides run-time access to these reports and supports the ad-hoc entry of selection criteria, calculation



formulas, and the target desktop application. You can then direct your results for automatic transfer to *SmartView*, Excel, Word, Microsoft Access, the Windows display, and IBM i or ASCII printers.

All data extractions, queries, and reports defined and run through *NGS-IQ* operate in accordance with your existing IBM i security. You may also develop database and report authority specifically for your *NGS-IQ* users with the *IQ SeQure™* module.

Smart Client Architecture

SmartView performs impressively on nearly any Windows workstation. It receives output exclusively through the *Qport Access* module of *NGS-IQ* via TCP/IP. Users need no additional IBM i connectivity software to operate *SmartView*. The software offers a long list of multidimensional analysis functions while requiring surprisingly little personal computer memory. It lets you connect and leverage the resources of the IBM i for data retrieval and then work offline while performing your analysis to make optimal use of your computing resources.

I N F O R M A T I O N W H E R E I T C O U N T S