

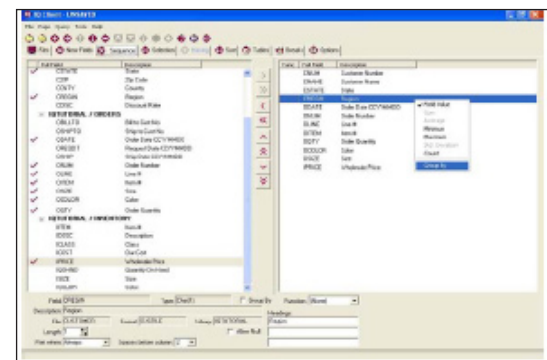
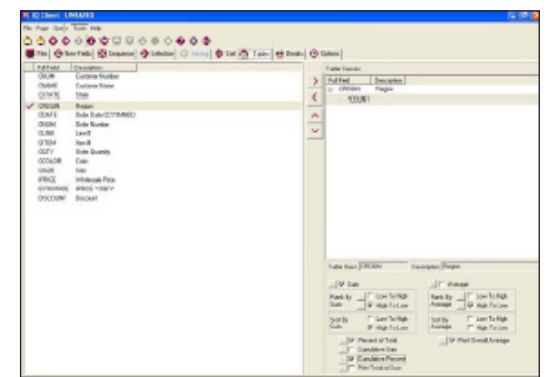
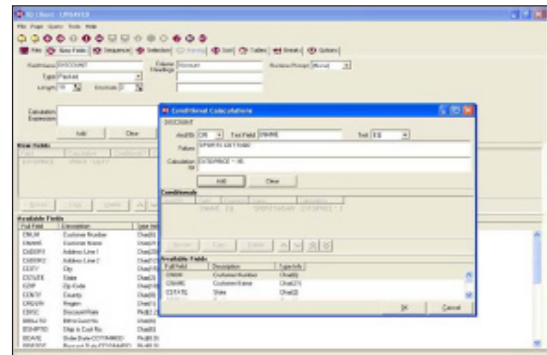
The new *IQ Client*™ module of *NGS-IQ* provides IBM i (AS/400) users with a graphical, point-and-click, drag-and-drop, query and report writing environment they can use anywhere, anytime. It combines the ease of use and familiarity of the Windows user interface with the reliability and power of *NGS-IQ*™ and your IBM i.

The Windows “smart client” architecture of *IQ Client* lets you develop everything from quick ad-hoc queries to production reports and instantly copy them to the IBM i for storage and processing. Your queries and reports process as native, batch jobs without compromising performance, security, or data integrity. Users do not need ODBC drivers or even an Internet connection when developing their queries.

IQ Client supports 100% of the function available in *NGS-IQ*'s *IQ Server*™ module on the IBM i. This design means your queries can include critical functions like the following:

- Multi-file joins
- Simple and conditionally calculated fields
- Run-time prompts for selection criteria and/or calculation methods
- Date arithmetic
- Report break summaries and calculations, rankings, running totals, averages, and percentages
- Extensive formatting
- E-mail and FTP delivery instructions and much more!

Users can output queries to display, a printer, DB2 (summary or detail), HTML,



XML, CSV, TXT, PDF, and other formats. When you use *IQ Client* with *NGS-IQ*'s *Qport Access*™, *SmartView*™ and *NGS Business Performance Dashboard* modules, your output options expand to include Microsoft Excel, Word, and Access; multidimensional “OLAP” presentations;

and even dynamic, graphical, Web-based dashboards.

IQ Client enables users to share the business and database knowledge embedded in previously developed queries to speed enterprise deployment. *IQ Client's* offline development capability means telecommuters and workers who travel can be productive wherever and whenever they need, even while in flight or working in places where Internet access is unreliable or slow.

How it Works

1. While connected to your IBM i, copy the structure of the DB2 files or your *NGS-IQ* query to your local drive. *IQ Client* does not transfer any actual records to your PC – just the file and field names and attributes or query object you request.
2. Write or revise your query.
3. Save and copy your query to the IBM i.
4. Run your query using *NGS-IQ's IQ Server*, *Qport Builder™* or *Qport Access* modules.

Users are only allowed to copy the structure of files or *NGS-IQ* query objects they are authorized to access. Security is enforced through the IBM i operating system's object authority and *IQ SeQure™*, *NGS-IQ's* optional security management module.

Once saved on the IBM i, queries created with *IQ Client* can be revised and run from *NGS-IQ's* Web browser and 5250 user interfaces. No query translation or conversion is required. You receive the benefits of a rich, Windows graphical development interface without sacrificing the simplicity of a native execution environment.

The user-friendly, graphical design of *IQ Client* can dramatically change the way you develop queries. Even long-time IBM i users will find their productivity rises as they use *IQ Client* to quickly navigate the query development process.

With *NGS-IQ* and *IQ Client*, you have virtually unlimited query, reporting, and business intelligence capabilities you can put into action.

About NGS

NGS, an advanced member of IBM PartnerWorld, has provided information solutions for IBM's midrange computing platforms since 1982. NGS' business intelligence and enterprise reporting solutions are used worldwide by thousands of private and public sector enterprises of all sizes. These organizations have successfully deployed the *NGS-IQ* solution to meet data access needs ranging from query and reporting to OLAP and data warehousing.

I N F O R M A T I O N W H E R E I T C O U N T S